

# Public libraries 2014-15

CIPFA data

The figures in this presentation are taken directly from or derived arithmetically from local council reports to CIPFA

Tim Coates – December 2015

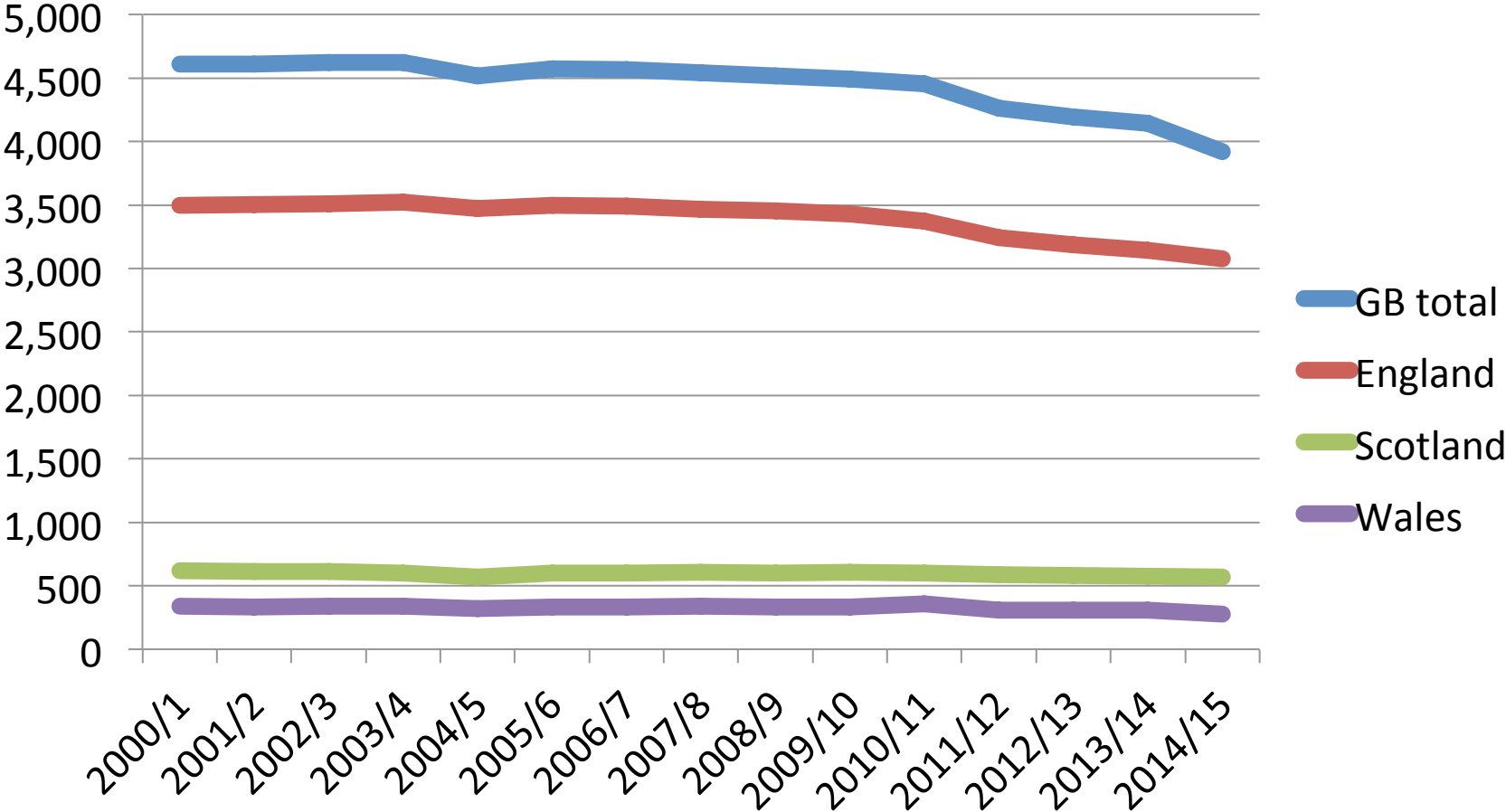
# Headlines

- Children's book lending has declined 17% in the last three years. (confirming the recent DCMS "taking part" survey figures)
- All library book lending has fallen 28% in the last three years
- Library use in major English cities is declining rapidly
- Purchasing of print books for libraries in England has fallen from £80m in 2005 to £49m last year
- Ebooks took 17.6% of the book fund and produced just 1.2% of book lending.
- Council library connected overhead costs have risen to £150m per annum (over and above library management costs)

In the UK there are 206 library authorities;  
 151 in England; 32 in Scotland; 22 in Wales and 1 in NI.  
 CIPFA has not included figures for Northern Ireland this year.  
 The following 31 other library authorities did not report fully;  
 (The CIPFA totals include estimates for the missing councils based on a previous year)

2013/14		2014/15		
Hillingdon	Wokingham	Haringey	Denbighshire	Wokingham
Haringey	Denbighshire	Knowsley	Merthy Tydfil	York
Knowsley	Merthyr Tydfil	Liverpool	Pembrokeshire	Lincolnshire
Liverpool	Pembrokeshire	Birmingham	Wrexham	Worcestershire
Rotherham	Wrexham	Bradford	NE Lincs	Caerphilly
Birmingham	Dumfries	Kirklees	Gateshead	Carmarthen
Bradford	E Lothian	Cornwall	Leeds	Denbigh
Kirklees	Rutland	Hartlepool	Bristol	Flint
Yorks ER	(18)	Middlesbrough	NE Lincs	Pembroke
Middlesborough		Wokingham	Redcar	Wrexham
27/12/15		Tim Coates - CIPFA data (with spreadsheet) 2014-15	Borders	(31)

# Number of libraries open more than 10 hrs per week



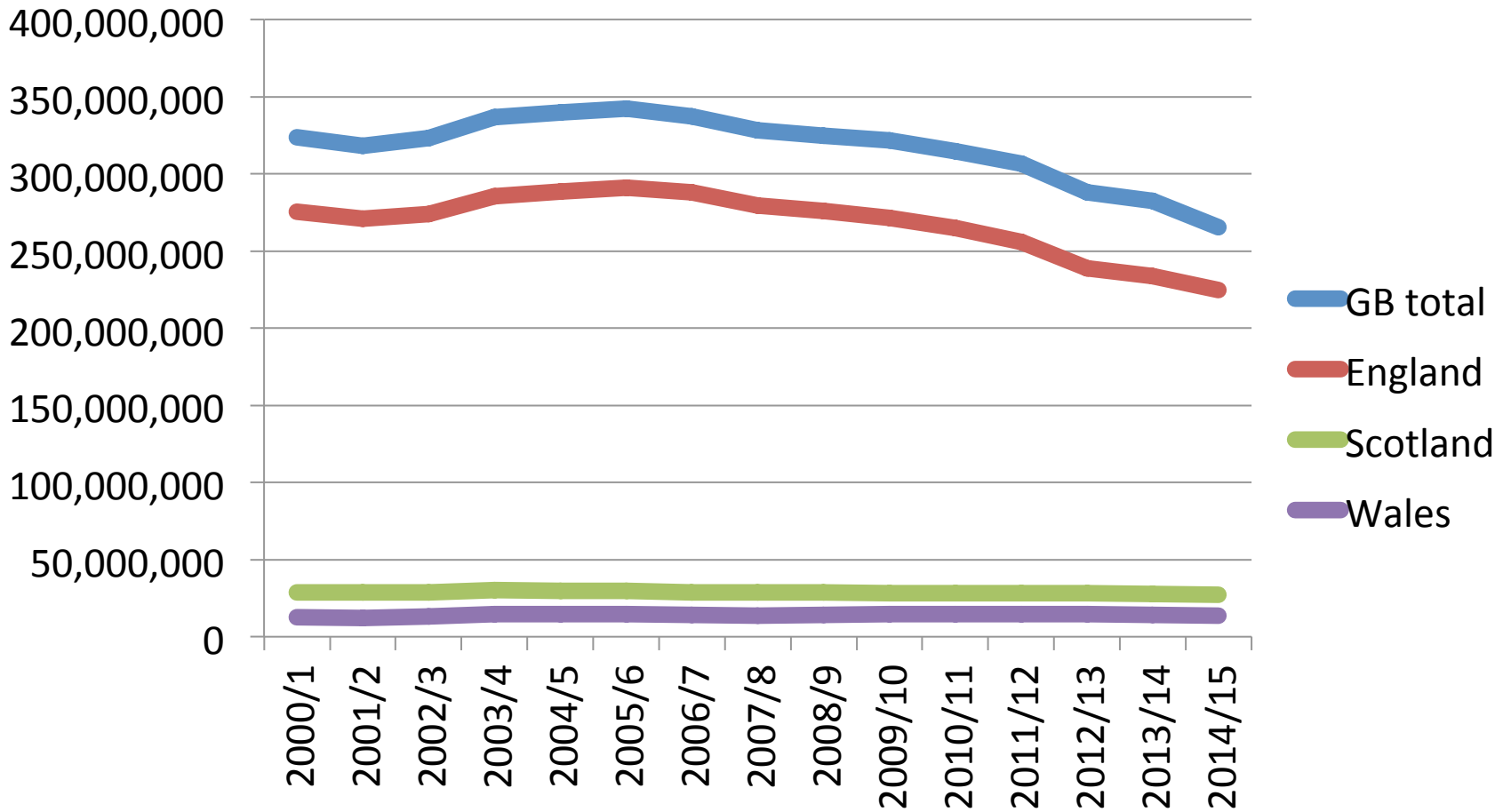
## Numbers of libraries open more than 10 hours per week

	2005/6	2013/14	2014/15	10 yr change	1 yr change
England	3,500	3,142	3,076	-12.1%	-2.1%
Scotland	600	573	567	-5.5%	-1.0%
Wales	332	308	274	-17.5%	-11.0%
<b>GB Total</b>	<b>4,574</b>	<b>4,145</b>	<b>3,917</b>	<b>-14.4%</b>	<b>-5.5%</b>

# Numbers of libraries in previous slide which are “Community managed”

	2012/13	2013/14	2014/15	1 yr change
England	109	126	146	+15.9%
Scotland	0	9	7	-22.2%
Wales	1	1	1	0.0%
<b>GB Total</b>	<b>110</b>	<b>136</b>	<b>154</b>	<b>+13.2%</b>

# Numbers of library visits

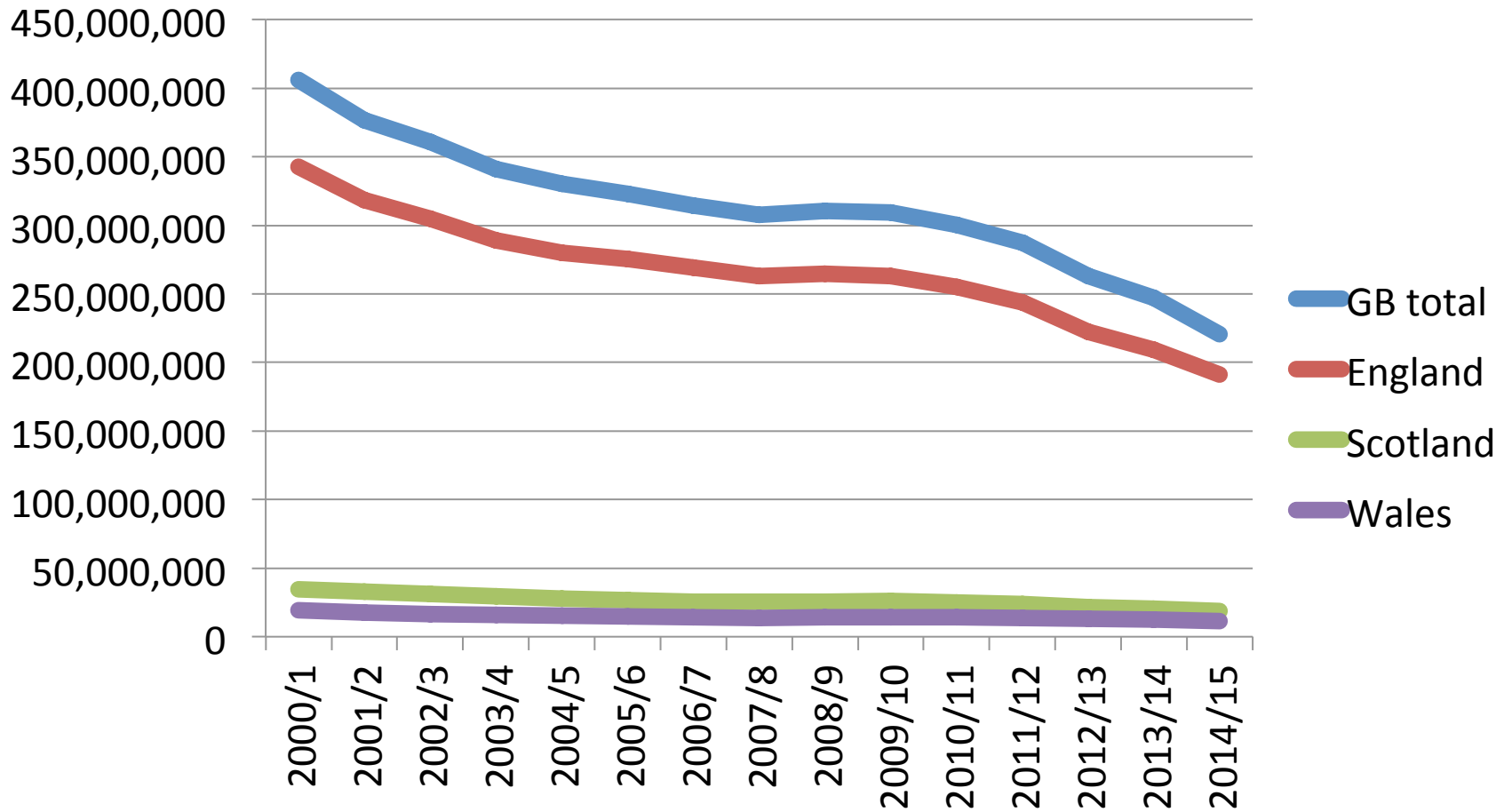


# Numbers of library visits

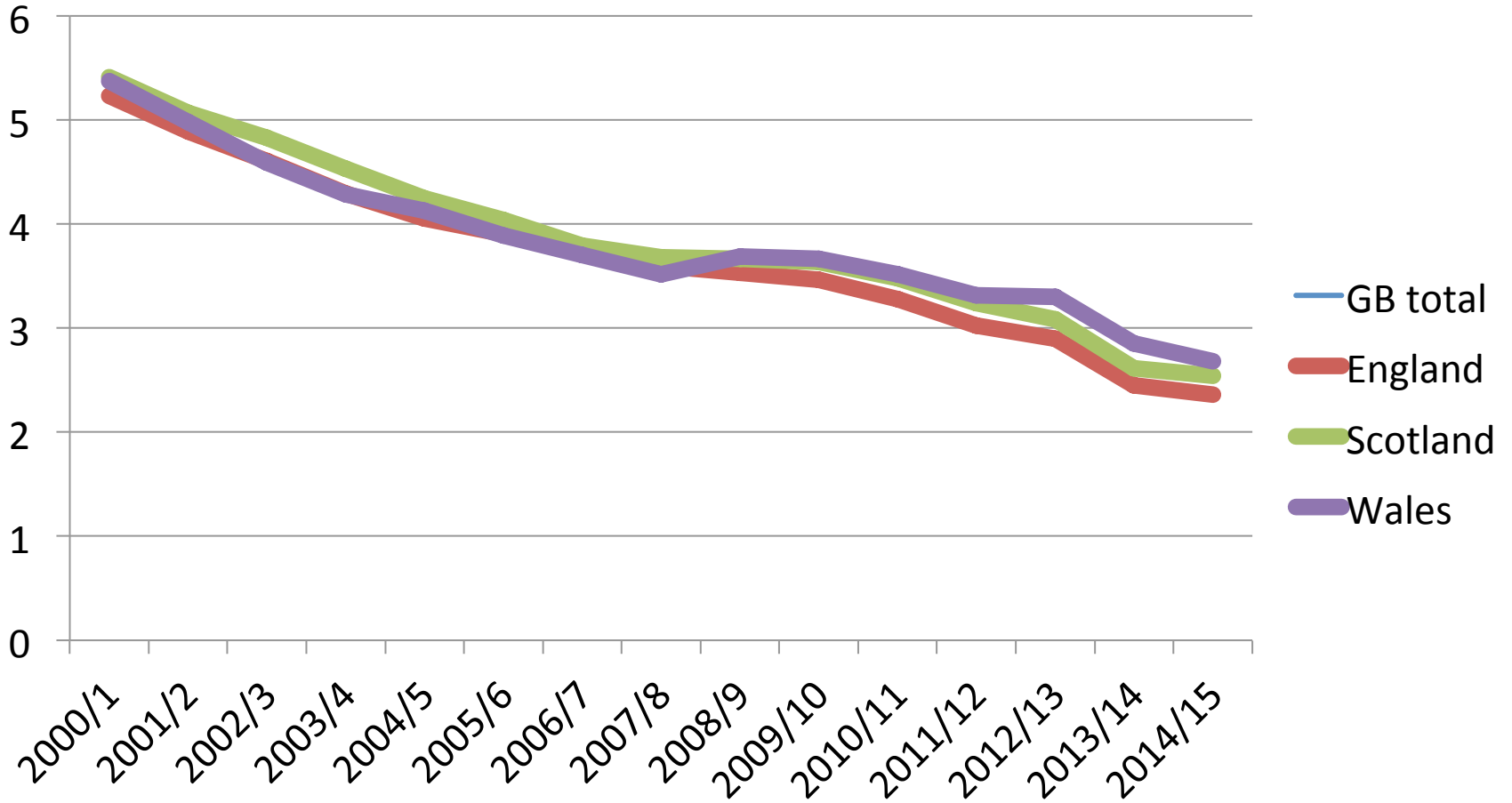
	2005/6	2013/14	2014/15	10 yr change	1 yr change
England	291.0m	234.0m	224.6m	-22.8%	-4.0%
Scotland	29.6m	27.9m	27.0m	-8.7%	-3.2%
Wales	14.7m	14.2m	13.6m	-7.2%	-3.9%
<b>GB Total</b>	<b>335.3m</b>	<b>276.1m</b>	<b>265.3m</b>	<b>-20.9%</b>	<b>-3.9%</b>



# Number of library book loans



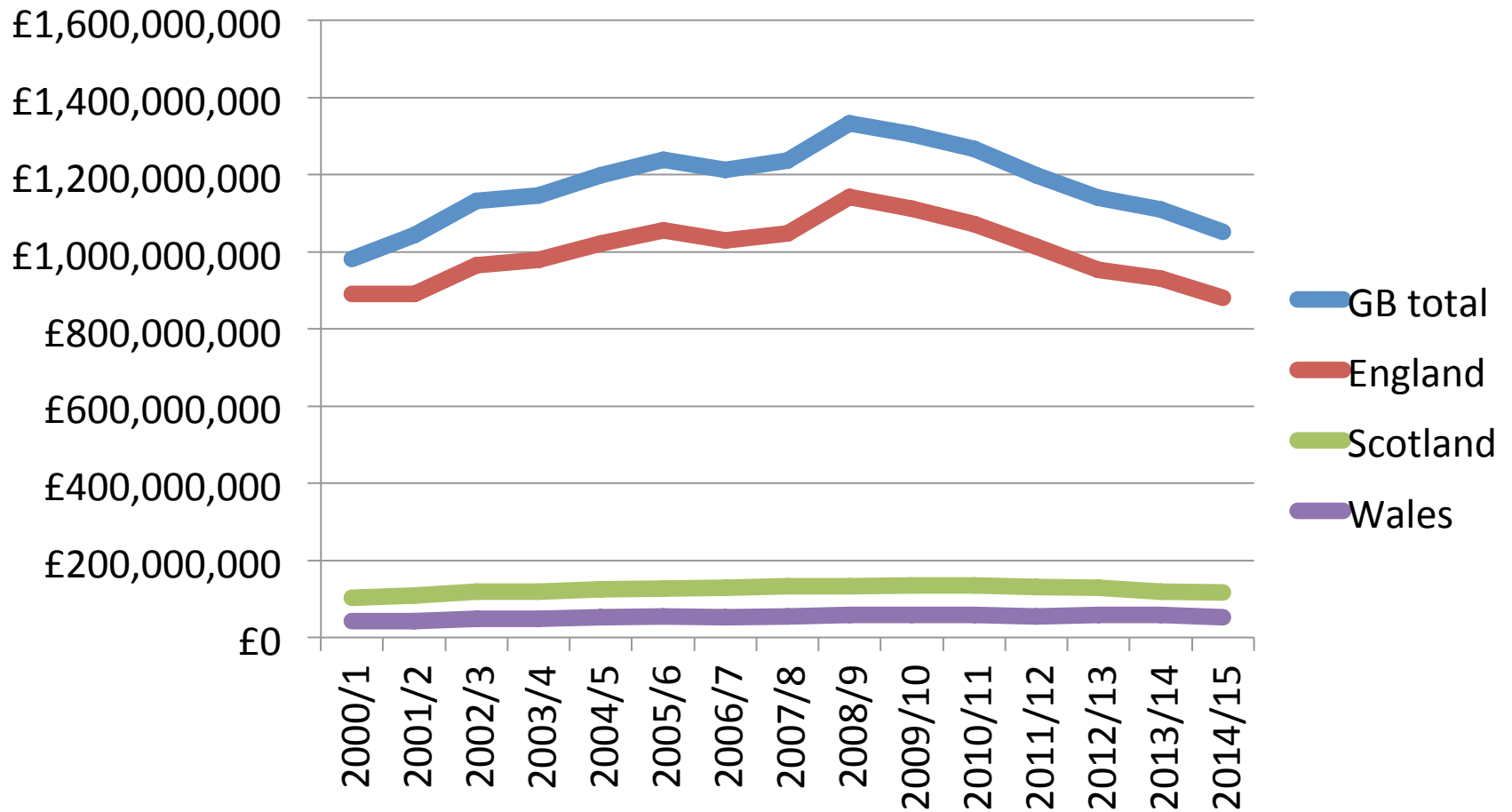
# Book loans per adult



## Fall in numbers of library loans

	Per adult	Per adult	Per child	Per child
	1 year	3 years	1 year	3 years
England	-3.8%	-22.0%	-20.1%	-28.5%
Scotland	-2.8%	-21.5%	-22.8%	-30.1%
Wales	-5.9%	-19.2%	-20.8%	-22.6%

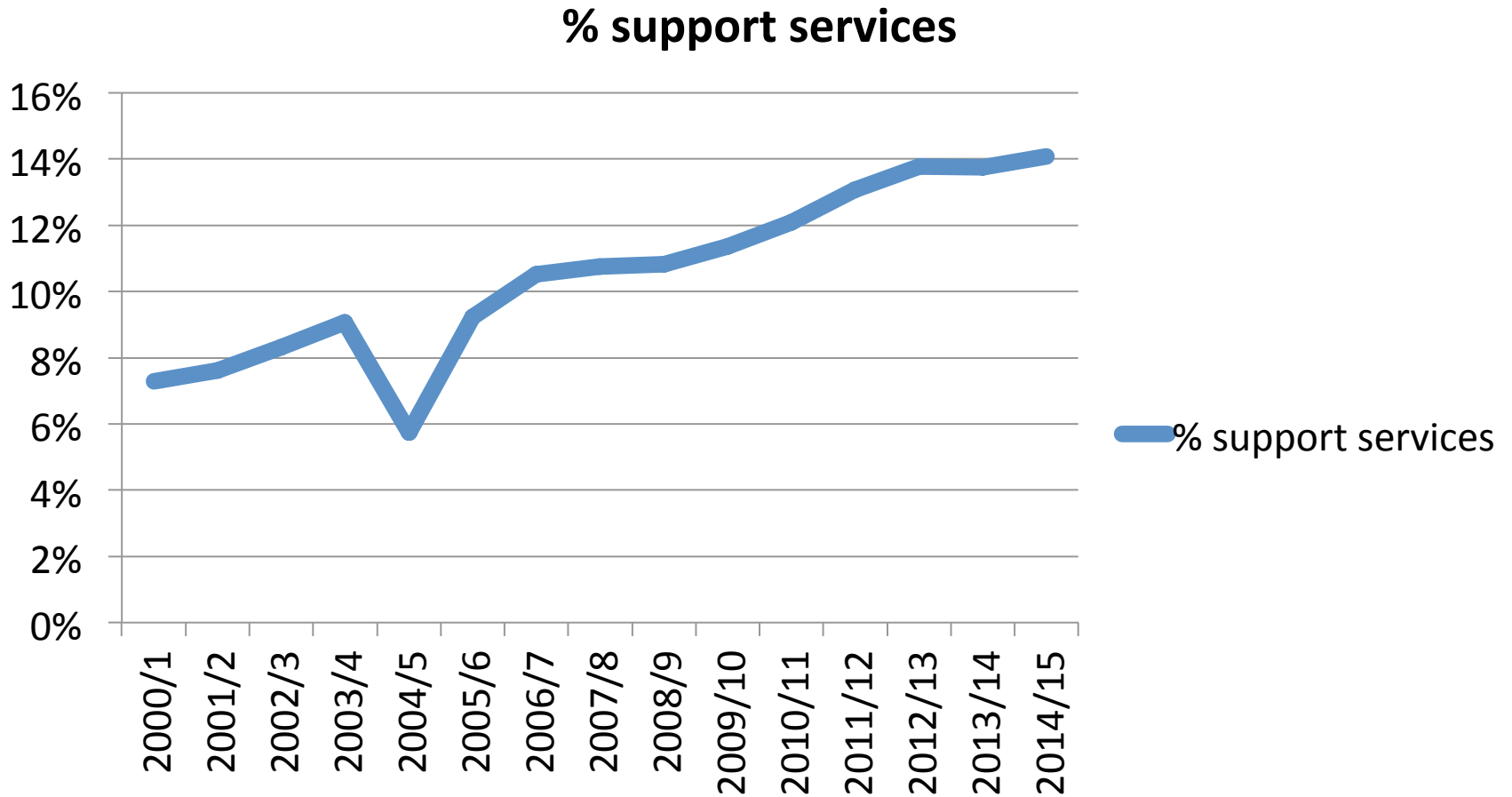
# Total expenditure on libraries



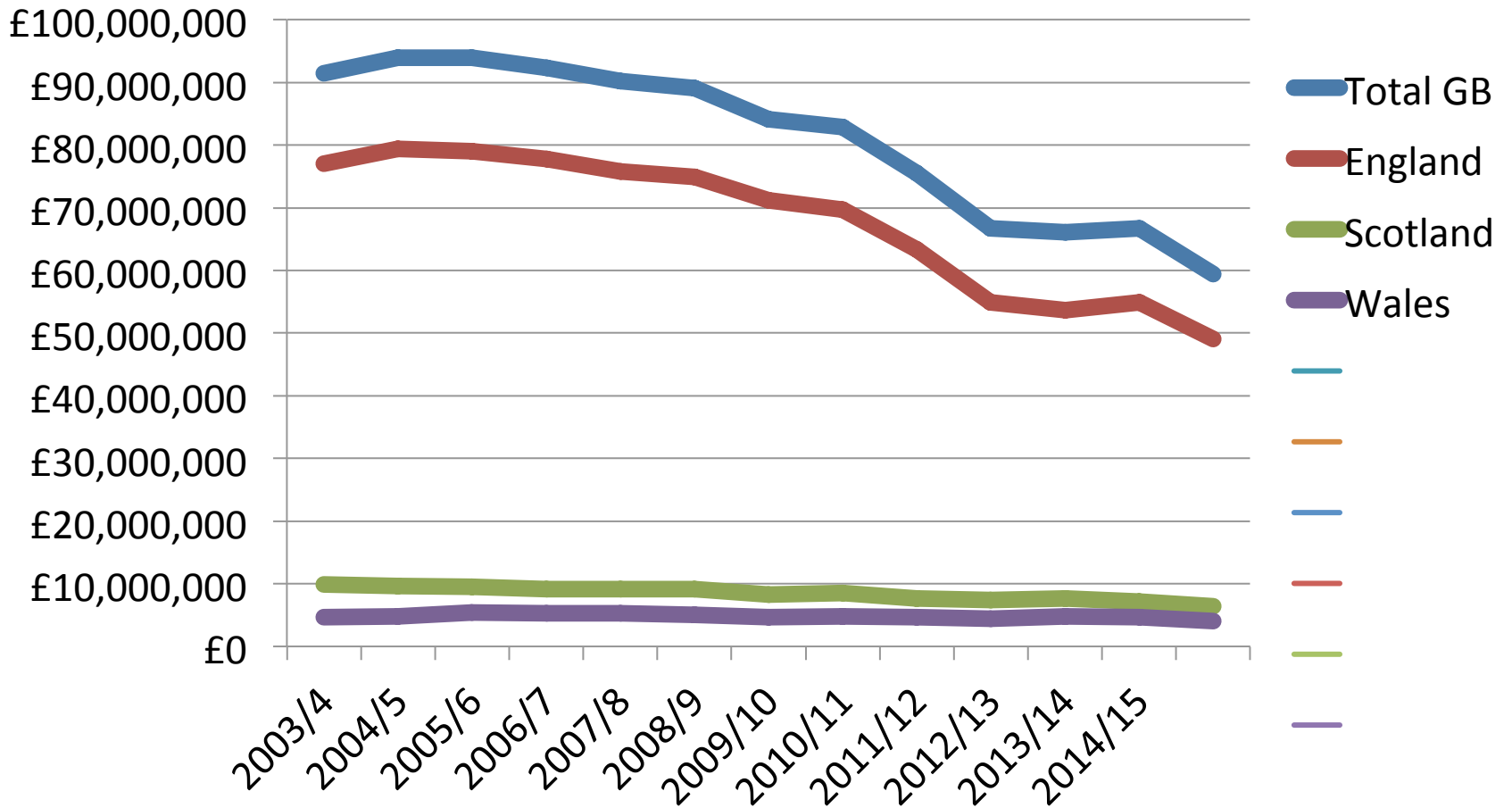
# Total expenditure on public libraries

	2005/6	2013/14	2014/15	10 yr change	1 yr change
England	£1,055.7m	£932.0m	£880.3m	-16.7%	-8.1%
Scotland	£125.6m	£119.1m	£117.8m	-6.2%	-1.1%
Wales	£51.9m	£58.2m	£52.8m	+1.7%	-9.3%
<b>GB Total</b>	<b>£1,238.3m</b>	<b>£1,109.3m</b>	<b>£1,050.9m</b>	<b>-15.1%</b>	<b>-5.3%</b>

# % of library expenditure on council support services



# Actual spend on acquiring print books £m



## Spend on print books and on digital books 2014/15.

( Note : unlike print books, collections of ebooks do not ‘build up over time’ – they are mostly purchased on licenses of set length and disappear when the license ends)

	Print Books	Digital Books	Total Books	Digital % Purchases	Digital loans % of All book Loans
England	£49.0m	£10.5m	£59.5m	17.6%	1.2%
Scotland	£6.3m	£1.4m	£7.7m	18.2%	2.4%
Wales	£4.0m	£0.5m	£4.5m	11.1%	2.0%
Total GB	£59.3m	£12.4m	£71.7m	17.3%	1.4%



# Councils which have shown increases in both visits and lending in the last year

Lambeth	Sandwell
Brent	Powys
Manchester	(6)
Redcar	

## Councils which have shown rapid decline in the last year

Hammersmith	Croydon	Newcastle	Plymouth
Kensington	Redbridge	Wolverhampton	Stockton
Westminster	Bury	Blackburn	Warrington
Barking	Sefton	Luton	York
Doncaster	Sheffield	Nottingham	Caerphilly
Carmarthen	Neath	Rhonda	

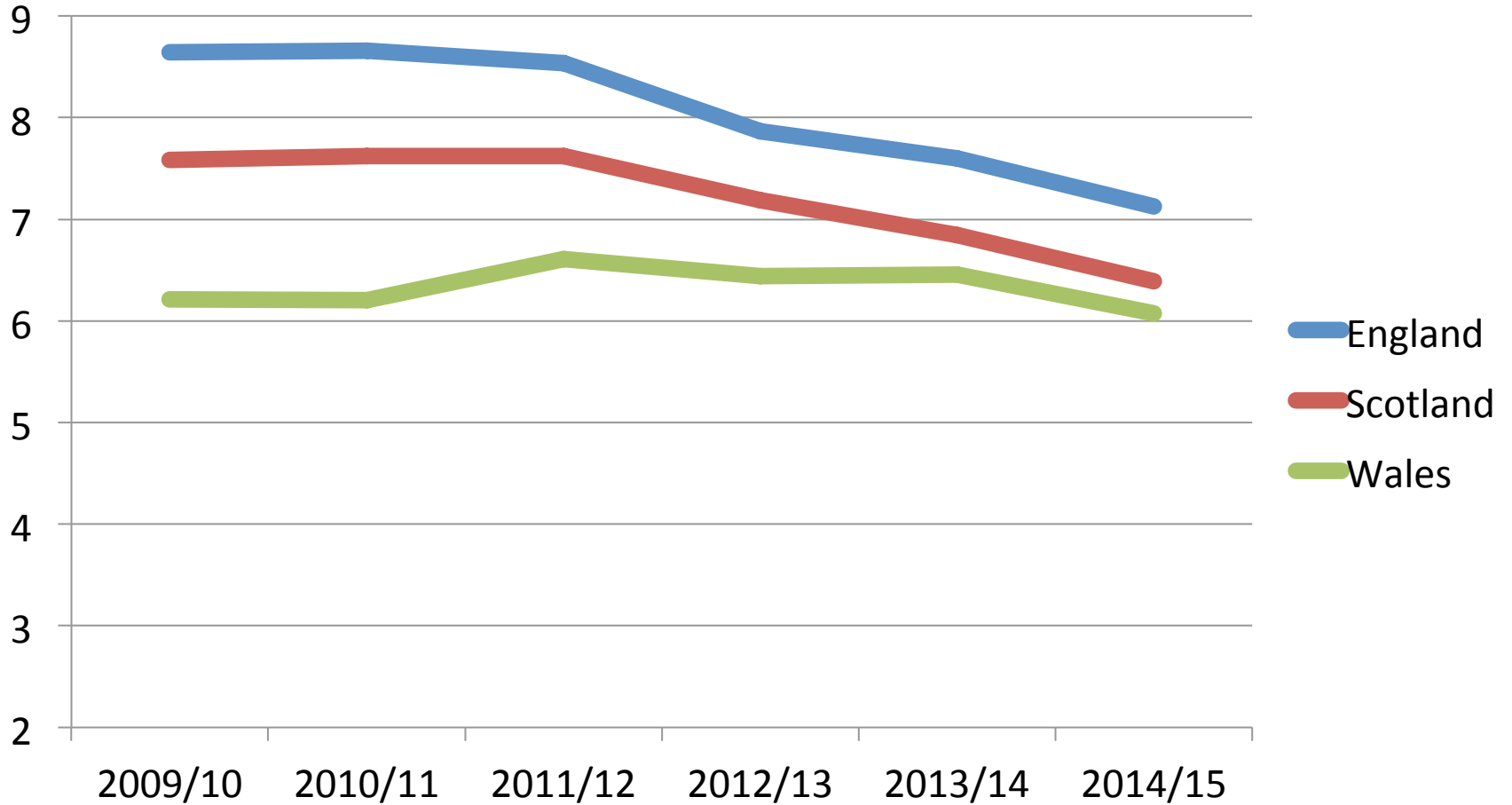
## Councils which have high levels of council recharge

Camden	Hammersmith	Islington	Lambeth
Lewisham	Kingston	Rochdale	Doncaster
Sunderland	Calderdale	Hull	Medway
Poole	Southampton	Thurrock	Torbay
Wiltshire	Buckinghamshire	Kent	Lancashire
Leicestershire	Somerset	Surrey	Warwickshire
Clackmannan	Edinburgh	Northamptonshire	Lincolnshire
Westminster	Hillingdon	Merton	Waltham
Milton Keynes			

# Councils which spend the most on childrens library books

Southwark	Brent	Havering	Redbridge
Stockport	St Helens	Sandwell	Walsall
Herefordshire	Luton	Peterborough	Derbyshire
Norfolk	Nottinghamshire	Suffolk	Gwynedd
Anglesey	Fife	Highland	Renfrewshire

# Book loans per child



# Councils which spend the least on childrens library books

Camden	Bromley	N Tyneside	Sunderland
Bournemouth	Dorset	Somerset	E Lothian
S Ayrshire	Sefton	Rotherham	Solihull
N Somerset	Wiltshire	N Lanarkshire	

## Councils which are most successful at lending library books (these two tables exclude Northern Ireland and the Corporation of London)

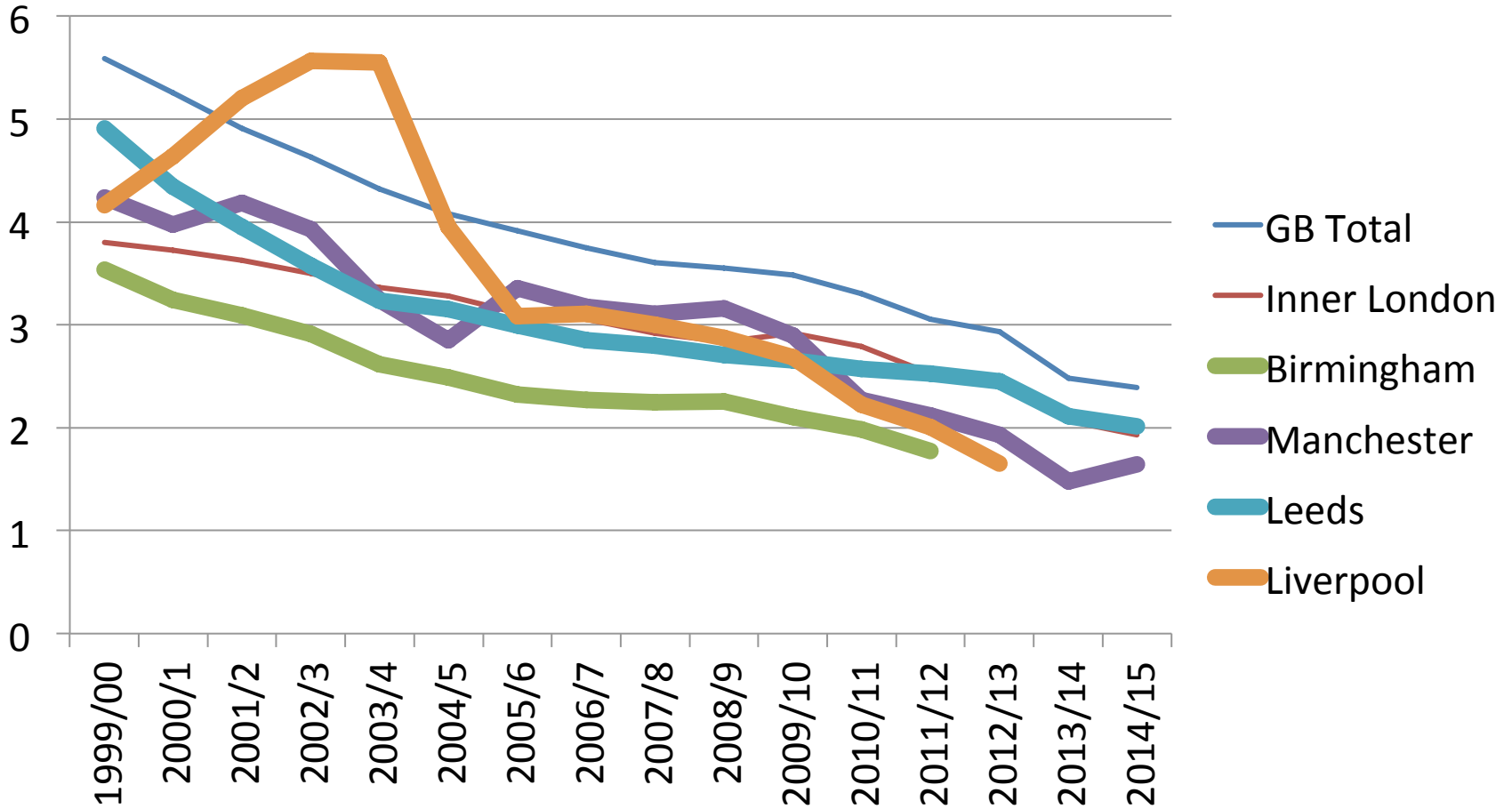
1	Orkney
2	East Cheshire
3	Shetland
4	Richmond (London)
5	Norfolk
6	Stirling
7	Oxfordshire
8	Worcestershire
9	Windsor and Maidenhead
10	Cheshire

## Councils which are least successful at lending library books

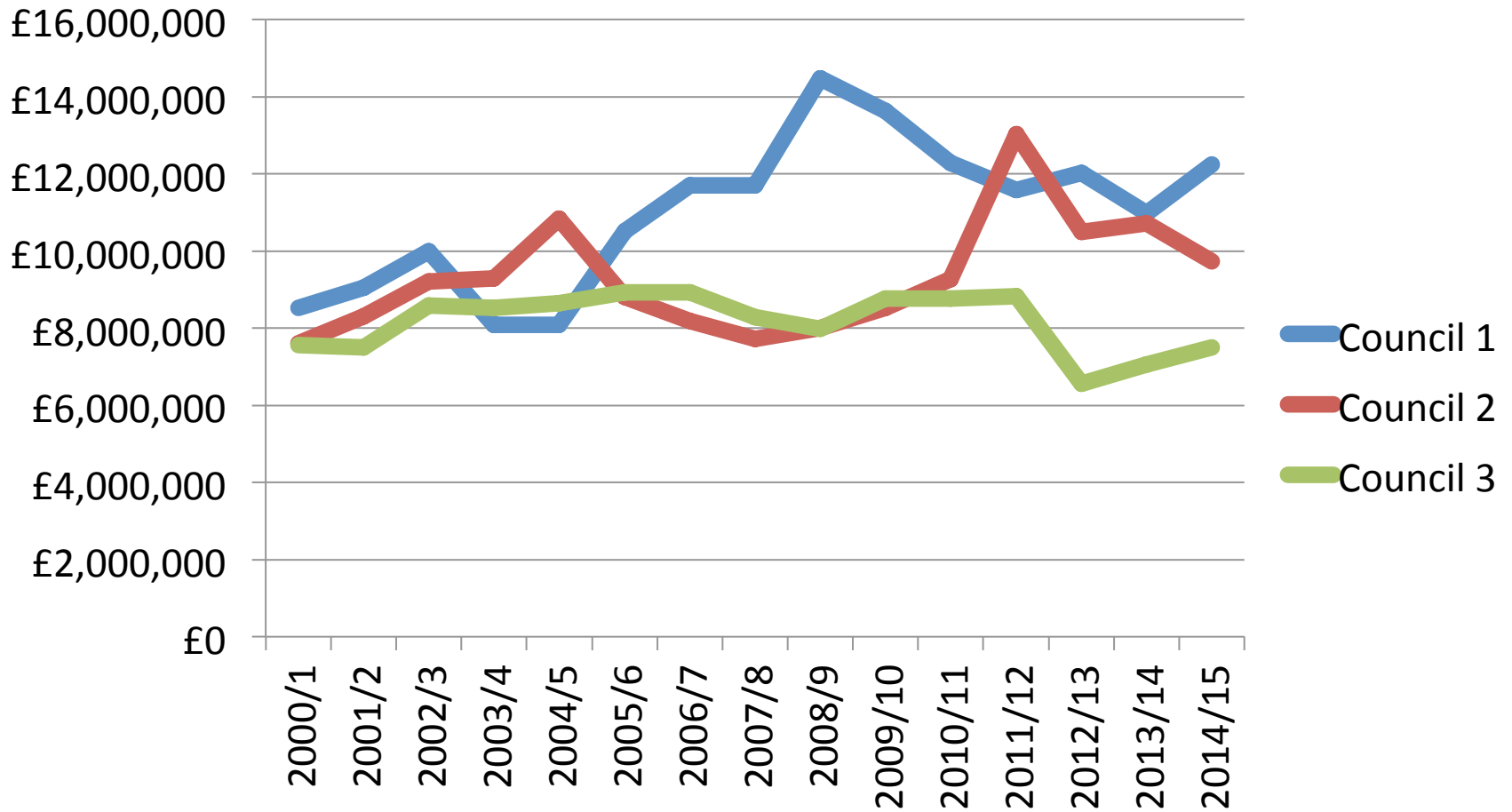
195	Lambeth
196	Newham
197	Inverclyde
198	Liverpool
199	Camden
200	Doncaster
201	Caerphilly
202	Sheffield
203	Hammersmith and Fulham
204	Kensington and Chelsea



# Major English cities – library book loans per adult resident



# 3 Councils on the Libraries Leadership Task Force: Funding of public libraries



# 3 Councils on the Libraries Leadership Task Force: Book loans per resident

